



REZERV

**ECONOMICAL
ECO-FRIENDLY
HIGHLY EFFICIENT**

SETTER TROLLEY

Setter trolley and incubator racks

We manufacture setter trolley to meet various needs of poultry-farming companies, these are:

- transporting egg trays from poultry houses to a hatchery and also from an egg warehouse to incubators;
- transporting egg trays within the hatchery and for using them in a hatching machine;
- transporting loads in boxes according to Customer specifications.

We manufacture incubator racks for:

- "Rezerv" incubators;
- incubators of other manufacturers according to the model, design and technical specifications of Customer.

Our technologies make it possible to manufacture products for any Customer requirements from various materials: galvanized steel (hot or cold zinc), aluminum, stainless steel, powder-coated steel.



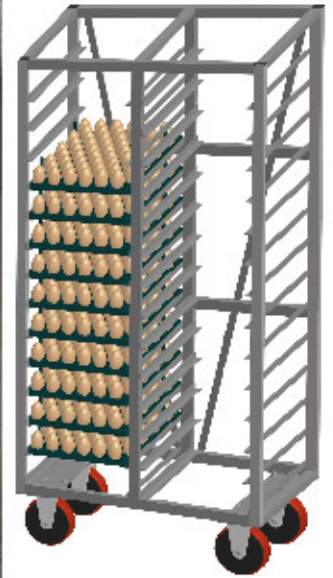
Incubator rack



setter trolley



setter trolley



setter trolley

+7 4872 419408

(ENG/RUS)

Mail: rezerv@rezerv.ru

Web: www.rezerv.ru

Marata str., 184,
Tula, Russia,
300004

SETTER TROLLEY,
INCUBATOR RACKS

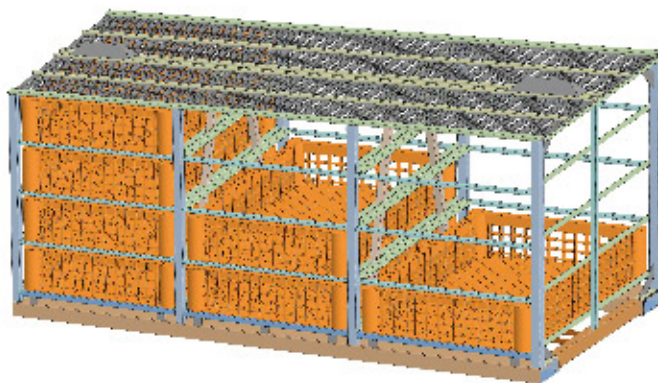
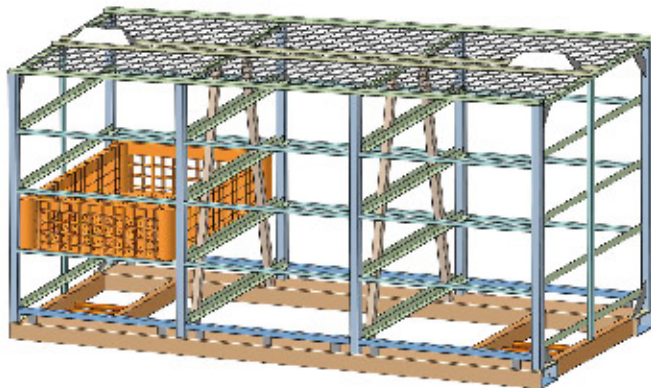
POULTRY TRANSPORT
CAGES (BOXES)





CAGES

Poultry transport cages (boxes)



Cage manufacturing options:

- designed by "Rezerv";
- designed according to the given model (sample);
- designed and outlined by Customer.

Our company will also develop the design:

- according to the technical specifications;
- for the available transport box.

Poultry transport cages (boxes) are equipped with special catchers for piling them in several tiers.

The design ensures the fixation of the trays from spontaneous movement during transportation.

All cages are protected against corrosion by hot-dip galvanizing.

The characteristics of cages in images:

- capacity up to 400 heads;
- dimensions 2,5x1,2x1,35 m;
- weigh 250 kg.

Poultry transport cage (box)





REZERV

ECONOMICAL ECO-FRIENDLY HIGHLY EFFICIENT

LED-LIGHTING FOR ANIMAL BREEDING

AGRO LED lamps



Characteristics

Power supply voltage, V	174 ...264
Power frequency, hz	50-60
Driver efficiency, not less than, %	85
Ambient temperature range, °C	- 40 ...+40
Light output of the lamp, not less than, lm/W	130
Colour temperature, K	2700-3200; 4700-5300
Average durability, h	50 000
Relative environmental humidity, up to, %	95
Degree of protection against dust and moisture	IP 67
Transportation and storage temperature, °C	- 40 ...+60
Power, W	16/25/33/41/49/58

Fixation variants



1/ On a rope with a zip tie

2/ On a rope

3/ Wall (ceiling) mount

+7 4872 419408

(ENG/RUS)

Mail: reserv@reserv.ru

Web: www.reserv.ru

Marata str., 184,
Tula, Russia,
300004

AGRICULTURAL LIGHTING

LED LIGHTING
FOR LIVESTOCK FARMING





REZERV

ECONOMICAL ECO-FRIENDLY HIGHLY EFFICIENT

CONTROL UNITS



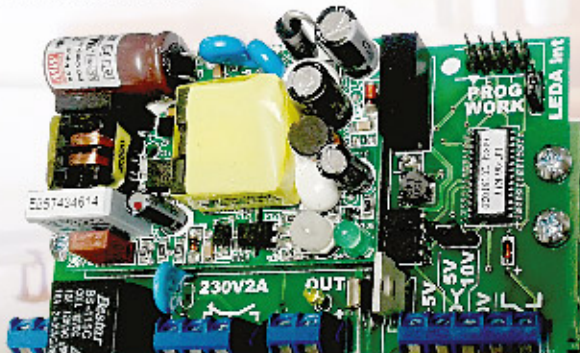
LCB-05-LED

LCB-05-LED unit is designed to control LED lighting in livestock buildings on schedule (automatic) or manual modes

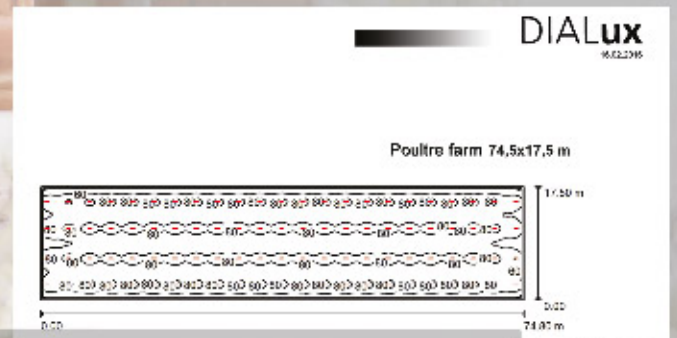


LCB-06-LED

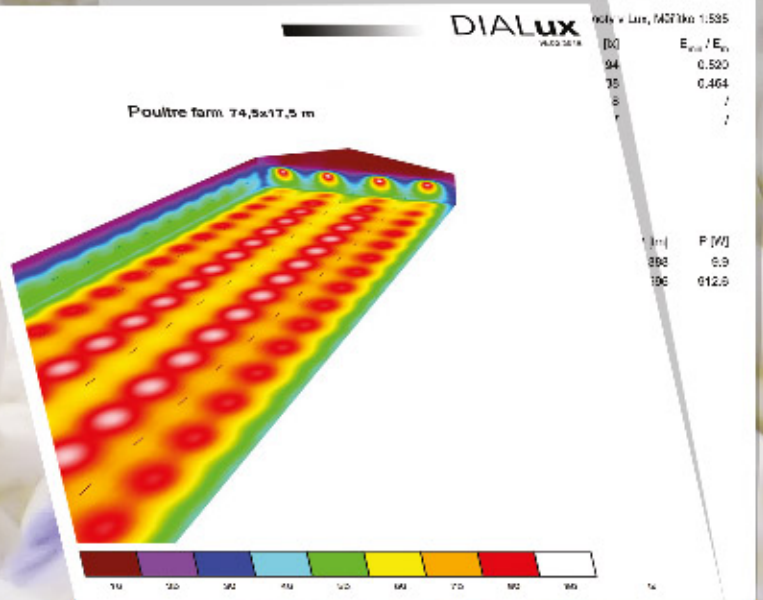
LCB-06-LED unit is designed to control LED lighting in livestock buildings and is controlled by an external computer or manually



LCB-06-kit



LIGHTING FOR THE PARENTS STOCK



LIGHTING CALCULATIONS

+7 4872 419408
(ENG/RUS)
Mail: reserv@reserv.ru
Web: www.reserv.ru

Marata str., 184,
Tula, Russia,
300004

AGRICULTURAL LIGHTING
LED LIGHTING
FOR POULTRY HOUSES





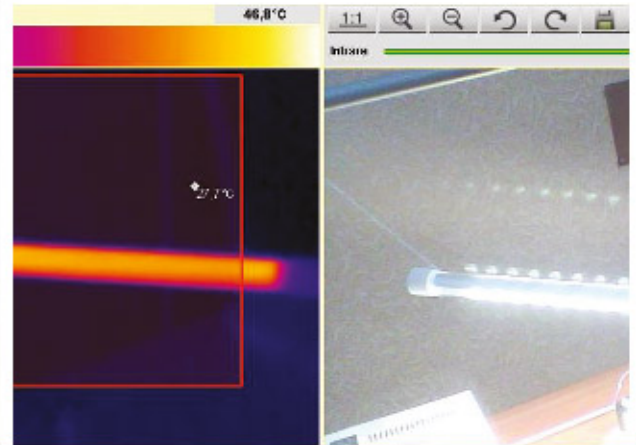
REZERV

ECONOMICAL ECO-FRIENDLY HIGHLY EFFICIENT

LED LUMINAIRE



LED LUMINAIRE



LOW TEMPERATURE



BROILERS IN THE CAGES



REARING LAYING HENS



TURKEY REARING



PARENTS STOCK

+7 4872 419408

(ENG/RUS)

Mail: reserv@reserv.ru

Web: www.reserv.ru

Marata str., 184,
Tula, Russia,
300004

AGRICULTURAL LIGHTING

LED LIGHTING
FOR POULTRY HOUSES



EGGS DESINFECTION



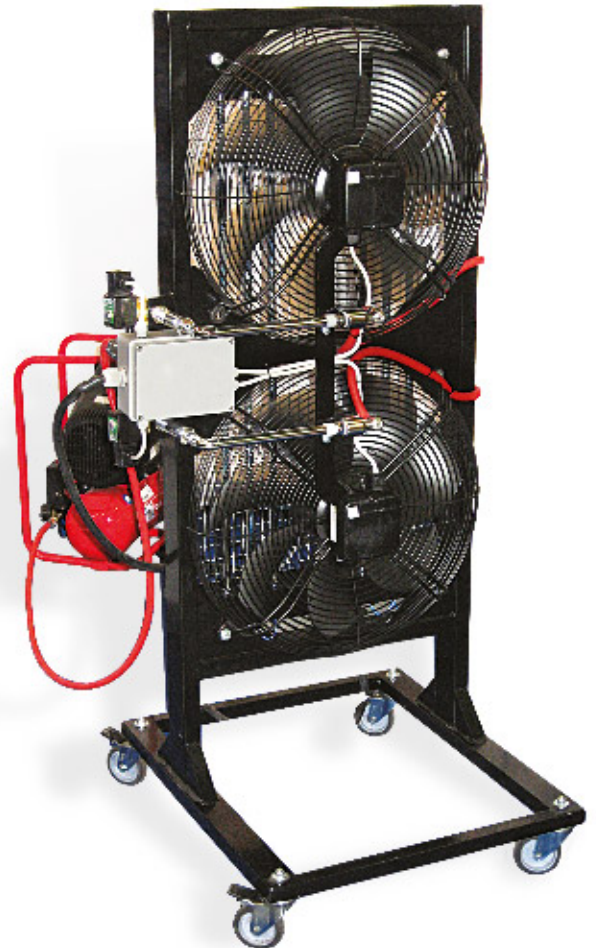
DK-02

DK-02 — automatic control unit

DKR-02 — active device for heating and dispersion of formaldehyde and ammonia



DKR-02



DKR-02

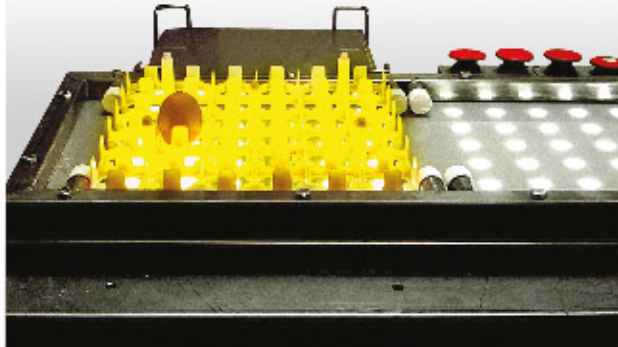




REZERV

**ECONOMICAL
ECO-FRIENDLY
HIGHLY EFFICIENT**

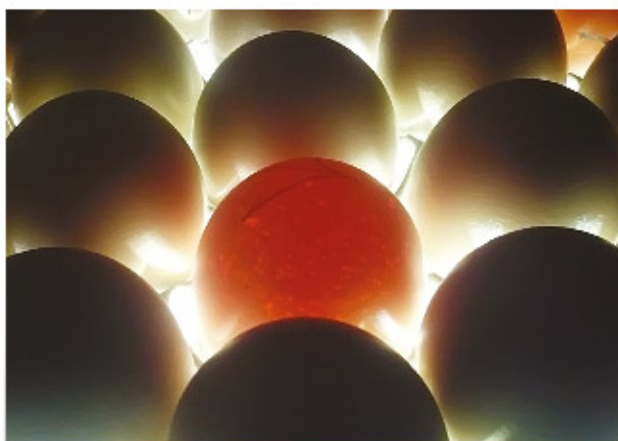
EGGS CANDLING



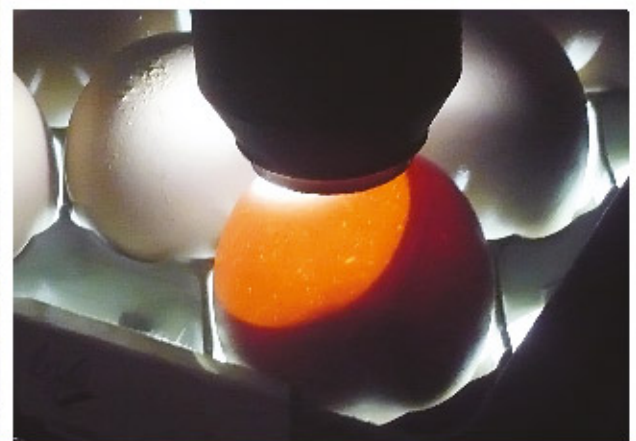
CANDLING TABLE



CANDLING UNIT



CANDLING OF EGGS



CANDLING UNIT INSPECTION



FERTILITY INSPECTION



CRACKS INSPECTION

+7 4872 419408

(ENG/RUS)

Mail: reserv@reserv.ru

Web: www.reserv.ru

Marata str., 184,
Tula, Russia,
300004

EGGS CANDLING

EGGS DESINFECTION





REZERV

ECONOMICAL ECO-FRIENDLY HIGHLY EFFICIENT

INCUBATORS, HATCHERY EQUIPMENT

CAPACITY

- Chicken eggs 16 896, 33 792
- Turkeys eggs 9 672, 19 344
- Goose eggs 6 760, 13 520
- Quails eggs 38 400



INCUBATORS "REZERV"

EXTERNAL SERVICE · MODULAR DESIGN



INDUSTRIAL HATCHERY WITH CABINETS "RESERV"

+7 4872 419408
 (ENG/RUS)
 Mail: reserv@reserv.ru
 Web: www.reserv.ru

Marata str., 184,
 Tula, Russia,
 300004

INCUBATORS
 HATCHERY EQUIPMENT





REZERV

**ECONOMICAL
ECO-FRIENDLY
HIGHLY EFFICIENT**

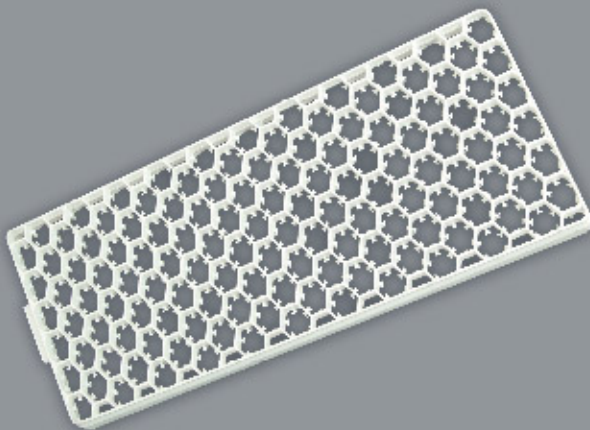
INCUBATORS, HATCHERY EQUIPMENT



INCUBATOR RACK



HATCHING TROLLEY



INCUBATOR TRAYS; HATCHING BASKETS

+7 4872 419408

(ENG/RUS)

Mail: reserv@reserv.ru

Web: www.reserv.ru

Marata str., 184,
Tula, Russia,
300004

INCUBATORS

HATCHERY EQUIPMENT



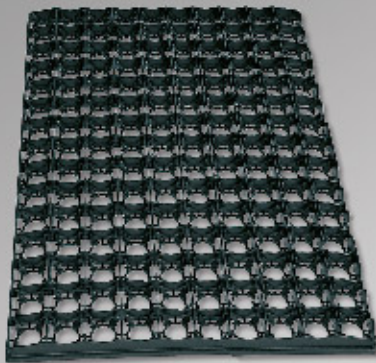


REZERV

ECONOMICAL ECO-FRIENDLY HIGHLY EFFICIENT

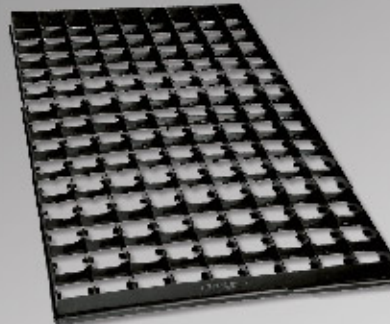
TRAYS AND BASKETS FOR INCUBATORS

TRAYS FOR INCUBATORS



Adaptability:
Pas Reform, Emka,
Petersime,
Hatchtech, Rezerv
Type: preparatory
Use:
for chicken eggs
*Capacity:
150 chicken eggs

Size: 31x475x710 mm



Adaptability:
Reserv, Pas Reform,
Petersime, Emka,
Hatchtech
Type: preparatory
Use:
for turkey eggs
*Capacity:
126/128 turkey eggs

Size: 31x475x710 mm



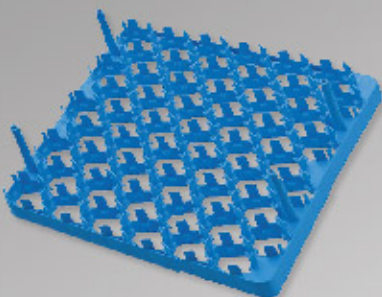
Adaptability:
Reserv
Type:
preparatory
Use:
for turkey eggs
*Capacity:
93 turkey eggs

Size: 45x305x880 mm



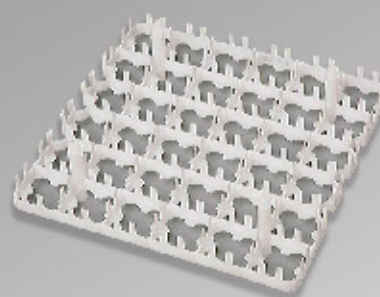
Adaptability:
Reserv
Type:
preparatory
Use:
for chicken eggs
*Capacity:
126/132 chicken eggs

Size: 45x305x880 mm



Adaptability:
Chick Master
Type:
preparatory
Use:
for chicken eggs
*Capacity:
54 chicken eggs

Size: 31 (75)x315x380 mm



Adaptability:
Jamesway
Type:
preparatory
Use:
for chicken eggs
*Capacity:
36 chicken eggs

Size: 27 (75)x290x290 mm

* For trays in photos

+7 4872 419408
(ENG/RUS)
Mail: reserv@reserv.ru
Web: www.reserv.ru

Marata str., 184,
Tula, Russia,
300004

TRAYS AND BASKETS
FOR INCUBATORS
HATCHER BASKETS





REZERV

ECONOMICAL ECO-FRIENDLY HIGHLY EFFICIENT

TRAYS AND BASKETS FOR INCUBATORS

HATCHER BASKETS



Adaptability:
Reserv
Type:
hatching
*Capacity:
126/132 eggs

Size: 105 (115)x380x975 mm



Adaptability:
Reserv, Petersime
Type:
hatching
*Capacity:
150 eggs

Size: 115 (130)x565x790 mm



Adaptability:
Jamesway
Type:
hatching
*Capacity:
144/168 eggs

Size: 105 (117)x380x1260 mm



Adaptability:
Hatchtech
Type:
hatching
*Capacity:
88 eggs

Size: 120 (165)350x665 mm

Hatcher baskets designed by Rezerv have the following characteristics:



increased rigidity of the bottom and side walls



easy to clean



provide good ventilation



meet the highest hygiene standards

+7 4872 419408

(ENG/RUS)

Mail: rezerv@rezerv.ru

Web: www.rezerv.ru

Marata str., 184,
Tula, Russia,
300004

TRAYS AND BASKETS
FOR INCUBATORS

HATCHER BASKETS





REZERV

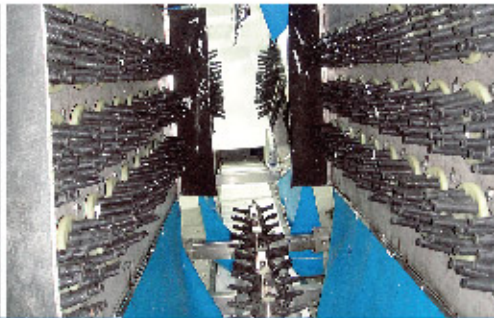
ECONOMICAL ECO-FRIENDLY HIGHLY EFFICIENT

BIRDS SLAUGHTER LINES

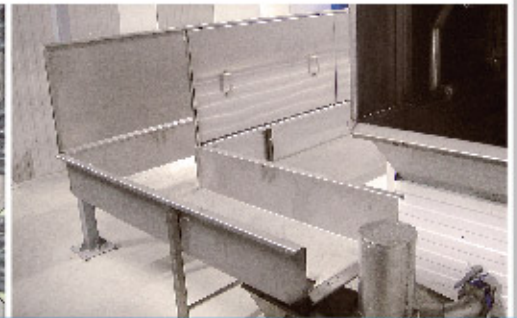
MAIN EQUIPMENT



Conveyor



Plucker



Blood tunnel



Electrical stunning machine



Scalder



Transport systems

List of Basic Technological Equipment

1. The transport system of a manufactory (conveyors and transporting conveyors) is the basis of any inline production.
2. An electrical stunning machine for pre-slaughter anesthetization of poultry.
3. A blood tunnel (blood extraction), evisceration trough for collecting waste and by-products during slaughter.
4. A scalder for high-quality scalding of poultry.
5. Pluckers of various efficiency with a large variety of modifications.
6. The machine for poultry head and neck separation for an automatic separation as well as the headless carcass disposal from the conveyor after evisceration.
7. The machine for poultry leg separation performs an automatic separation of the paws and the carcass disposal to pass it to the next stage.
8. Carcass washing equipment to wash away the remnants of blood and giblets before cooling and packaging.
9. Equipment for cooling carcasses, a cooling bath in conjunction with a cooling tunnel will prepare the carcass for packaging, further sale or further processing.
10. Equipment for waterfowl waxing, specific equipment for poultry farms, used only for slaughter of waterfowl (goose, duck), after the molting season.
11. Conveyor sanitation equipment - an automated device for cleaning the conveyor at the end of the technological cycle.

+7 4872 419408

(ENG/RUS)

Mail: reserv@reserv.ru

Web: www.reserv.ru

Marata str., 184,
Tula, Russia,
300004

BIRDS SLAUGHTER LINES

MAIN EQUIPMENT



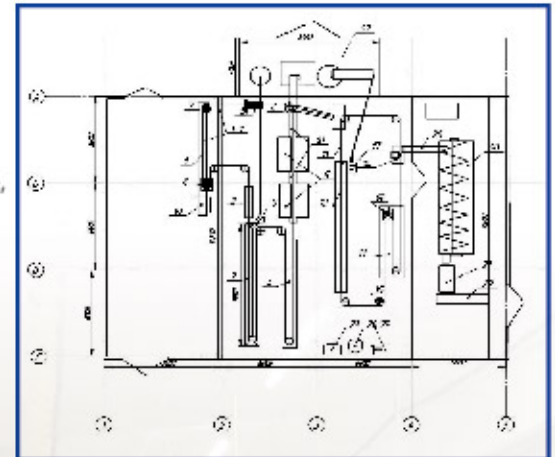


BIRDS SLAUGHTER LINES

EXAMPLE OF A READY CASE

Technical characteristics of the line

Bird species	broiler
Productivity	500 heads per hour
Live weight	2–3 kg
Conveyor type	chain, traction, plate. Stamped plate, galvanized plate, L=80 mm.
Conveying track:	round rustproof tubes d=42 mm
The shackle pitch	160 mm
The duration of bleeding	3,5 min
The duration of the heat processing	3 min
Water temperature during heat processing	58–59 °C



S No.	Equipment	amount	unit of measure
1.	The conveyor metal frame (zp)	2	t
2.	Conveying track 08H18N10	60	LM
3.	Chain conveyor FTSL-6/41	60	LM
4.	Conveyor drive	1	pcs
5.	Belt tensioner	1	pcs
6.	Conveyor turn track	5	pcs
7.	Trucks	375	pcs
8.	Electrical stunning machine	1	pcs
9.	Bath for blood recovery 5 m with protection, width 1 m, height 1,5 m	1	pcs
10.	Scalder (water heating 90–95 degree, L × W × H: 6 000 × 1 000 × 2 800 mm)	1	pcs
11.	Plucker K7-FTSL 10 N (elongated stainless design L=2 000 mm)	2	pcs
12.	The machine of poultry leg separation	1	pcs
13.	Trough for transporting waste d=7 500 mm	1	pcs
14.	Stomach cutting machine	1	pcs
15.	Stomach washing	1	pcs
16.	Cuticle removal machine per workplace	1	pcs
17.	Pneumatic scissors	1	pcs
18.	Conveyor sanitation equipment	1	pcs
Cooling line			
19.	Screw cooler 5 000 × 2 100 × 2 300 mm	1	pcs
20.	Separator for separating liquids from carcasses	1	pcs
21.	Packing table	3	pcs
Processing waste transportation system			
22.	Blood pump	1	set
23.	Evisceration waste transfer pump	1	set
24.	Transporting conveyor for feather retraction 5 500 × 500 mm (straight) + 2 500 × 500 mm (sloped)	1	pcs
25.	Evisceration separator	1	pcs
Control system			
26.	Screw compressor	1	pcs
27.	Line control board	1	pcs

